

# A short note on camels exports from the Sudan: Importers conditions and associated practices

Prof. Ahmed ELGhali Ahmed  
Veterinary Research Institute (VRI),  
Sudan



المؤتمر الإقليمي لرعاية وإنتاج الإبل  
تحت النظام الرعوي المفتوح  
THE Regional Scientific Conference of Camel  
Management and Production Under Open  
Range System (RCCMPR)



# Important points

- The Sudan exports camels to Saudi Arabia, to other Gulf countries & to Egypt.
- These countries import meat &/or racing camels.
- The recipient countries usually have their own conditions.
- To achieve these conditions coordination between the GDQ and M H, VRI and exporters should be well identified.

# Exportation Process



Collection Of Animals

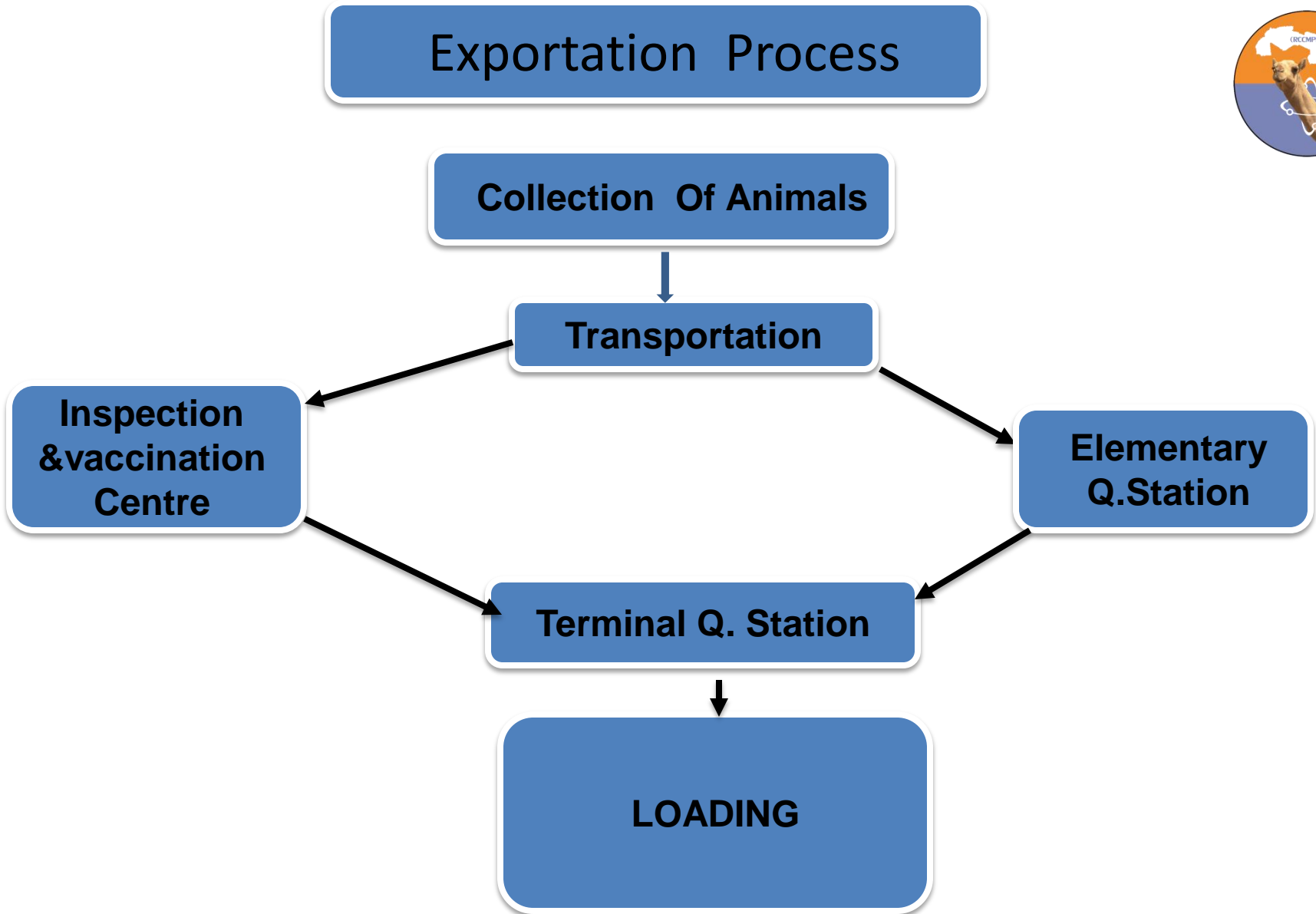
Transportation

Inspection  
&vaccination  
Centre

Elementary  
Q.Station

Terminal Q. Station

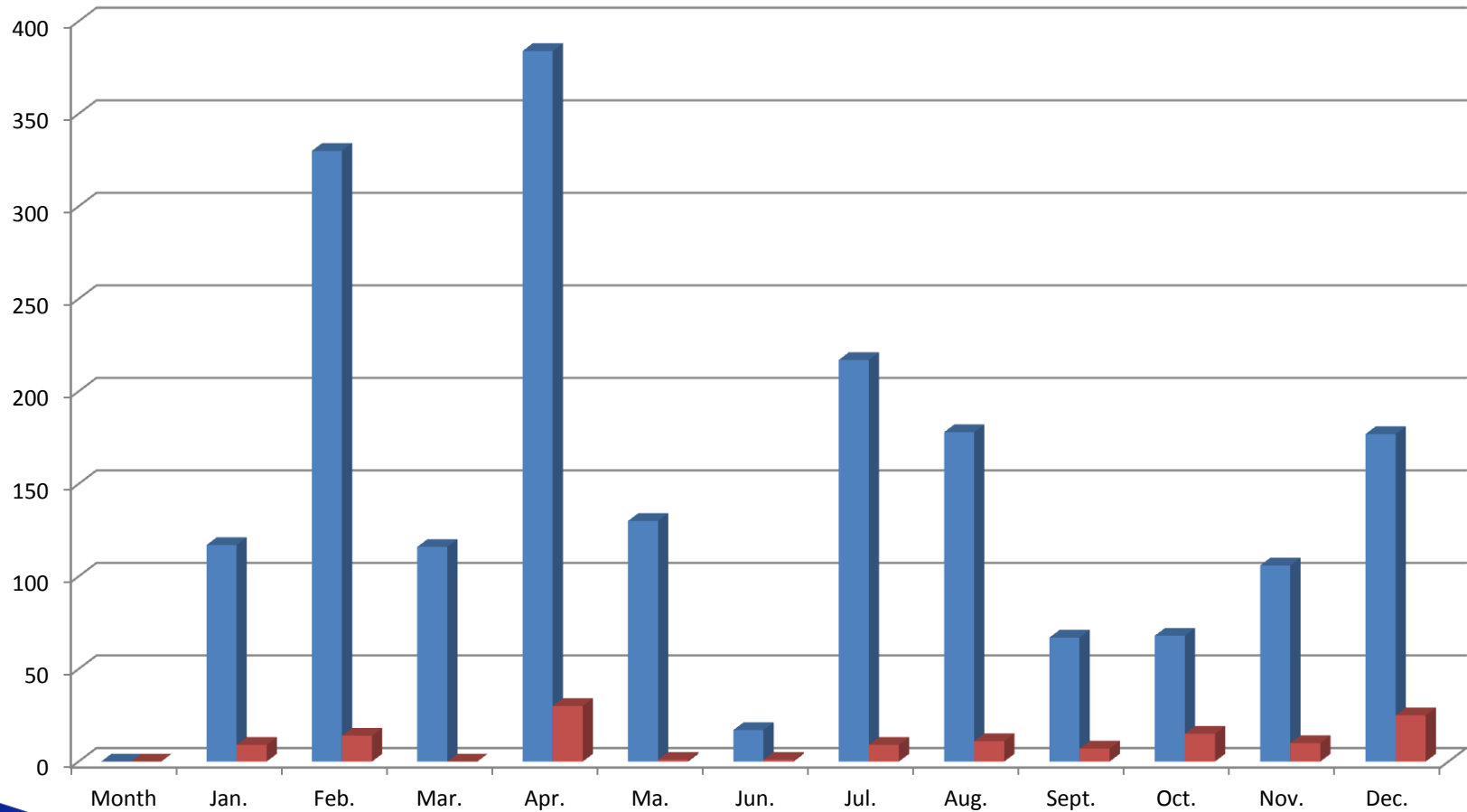
LOADING

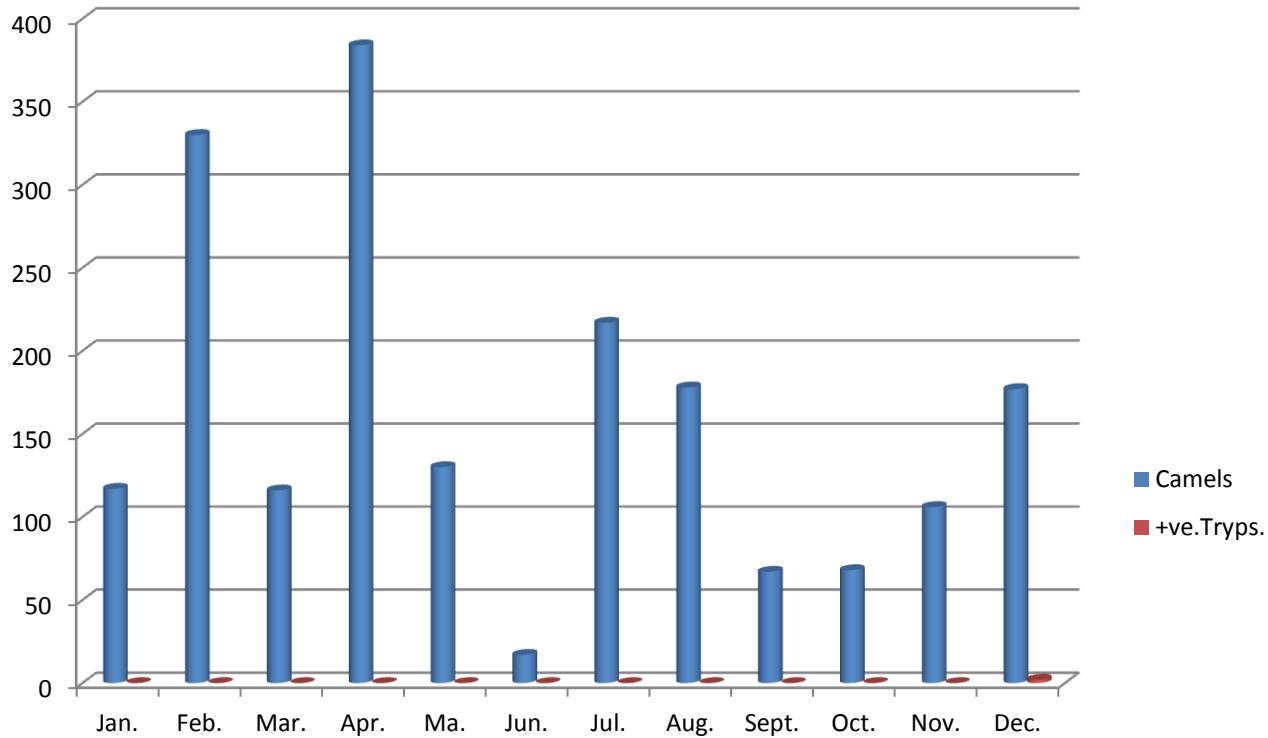


# How our camels say good by



# Brucellosis testing for racing camels (Kassala\_2014)

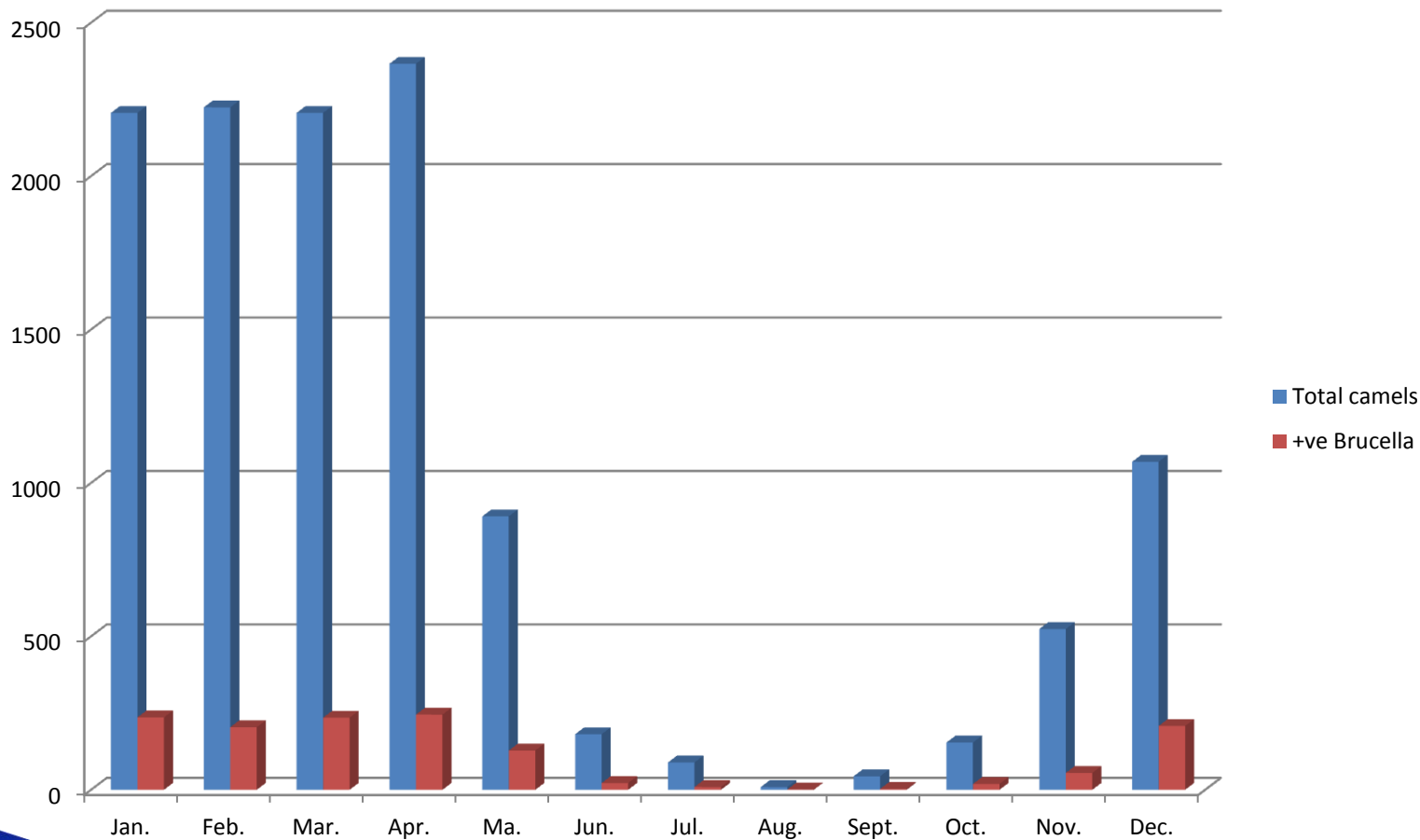




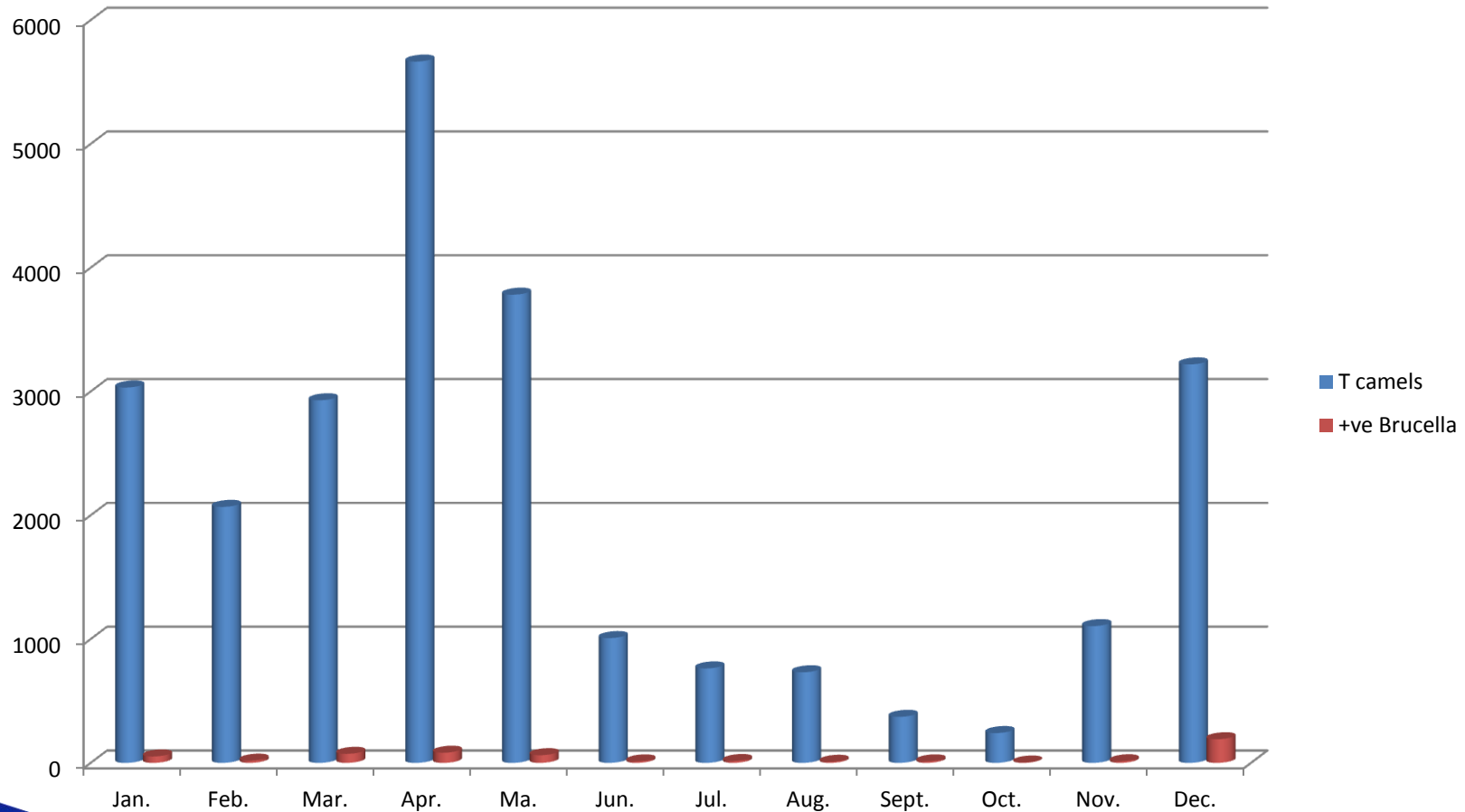
## Trypanosomosis testing for racing camels (Kassala)



# Brucellosis testing for meat camels in Kassala



# Brucellosis testing for racing & meat camels in Port Sudan Vet. Res. Lab.





# Camel cargoes rejected from Saudi Arabia during 2014



Number of cargoes	Total camels	Mentioned Reasons	Retesting Results
1	25	Tick Infestation	Recent infestation
2	228	Brucellosis	3,7 & 1,1 % +ve
3	94	Camel pox	No lesions
1	19	Camel pox+ Pseudotuberculosis	No lesions Exc.
7	289	Pseudotuberculosis	No lesion
Total (14)	655	12/14 (85,7%)	NO Real Reasons



# Camel Pox



# C & C, NOT C, BUT, Impact E (MERS & Exportation)





# Recommendations

Conclusively, to improve camel exportation the following points should be achieved:

- Improvement of veterinary facilities and services at producing and trading levels.
- Training and awareness should be strongly implemented for all stakeholders and partners.
- Laws and legislations should be activated.
- Application of quality management system at all exportation levels.



***THANK YOU  
MERCI BEAUCOUP  
SHOKRUN***

