

التصميم المعماري 5

Architectural Design 5

الرمز	اسم المقرر	نظري	متابعة	عملي	مجموع الاتصال	ساعات معتمدة	ساعات امتحان
311 عمر ARC 311	التصميم المعماري 5 Architectural Design 5	1	10	-	11	6	-

وصف المقرر :-

تصميم مبنى مكتبي متوسط الحجم صناعي ويشمل العمل في هذه المشاريع جمع وتحليل البيانات وبحث مقومات التصميم مع ايجاد البدائل المتعددة وتشمل وثائق التصميم ورسومات تقنية ونموذج مجسم و اخراج التصميم النهائي في اظهر معماري بالحبر الصيني.

اهداف المقرر :-

1) تأسيس القدرة على الملاحظة والتحليل والربط والتعبير و التطبيق على المباني الإدارية و الصناعية

محتويات المقرر:-

جمع المعلومات
تحليل المعلومات
التصميم الأولي
التصميم المتطور
التصميم النهائي

مخرجات التعلم:-

- المقرر يمكن الطالب من إبتكار و عرض الأفكار المعمارية
- المقرر يعرف الطالب بتقنيات الإظهار المعماري

طريقة التدريس:-

3 محاضرات في الأسبوع لكل منهما (4) ساعات متواصلة
توجد فقط تمارين عبارة عن الرسومات

طريقة التقويم :

أعمال السنة .

المراجع المستخدمة :-

- 1)Ernst Peter Neufert (Architect's Data) thread-edition 2000 Blackwell Science.
- 2)Joseph D'Amelio (Perspective Drawing Handbook) 1964, Tudor Publishing Company.

Architectural Design studio Project no. 1

PROJECT TITLE: Administrative Building

The Ministry of Planning and Urban Development

1.INTRODUCTION:

Administration branch of social science, is the process of planning, organization and coordination, guidance and oversight of the human and material resources to achieve the best results in the shortest and lower material costs. The Department is one of the most important humanitarian activities in any society, on the basis of different stages, its development, its impact on the lives of management societies associated with economic, social, political. And because the

Administration is engaged in the collection and use of economic resources to satisfy the needs of the individual and the group in society. As the Administration makes social progress, States adopt to achieve progress and prosperity for its citizens, and successful management is key to the success of the Organization and its superiority to its competitors.

The Department is also known as the process of making the right decisions and ongoing planning, monitoring and controlling the sources of institutions to reach the desired goals of the institution. Through direct hiring and developing human resources, financial, material and intellectual and moral resources.

2.THE PROJECT:

The administrative building is a building that shows the progress of society, and it's a unit of the integral community about where that office building models is inseparable from the architectural society its site depends on the purpose and quality that will be used in this building.

The Ministry of urban planning one of the most important ministries associated with citizen's life is connected, as is the almost provide the most important life requirements of supply water and electricity and residential land and territories of different services of hospitals and schools, kindergartens and other supervising premises upon which conformity to accepted standards in addition to road construction and all human development infrastructure and develop a place commensurate with the development of the region in various fields for all the Urban Planning .

Ministry of urban planning of Khartoum need to created a building that combines various Ministry units of the highest design and construction specifications so that it is a landmark in the State.

3. PROJECT COMPONENTS :

The basic form of a building is, ideally, based on its functions the minimum spaces requirements are:

1. Administrative zone:

- High administration requirements .
- All other Ministry units requirements.
- Meeting halls.
- Conference halls.
- Other requirements.

2. General Services:

- Reception.
- Restaurants and cafes.
- Toilets.
- Stores.
- Other requirements.

3. Landscaping:

- Soft landscape (trees and lawns).
- Pools and waterfalls.
- Car parks.
- Other requirements.

4.PROGRAMMING &SCHEDULING:

4.1. DATA COLLECTION AND ANALYSIS: submit on 28\11\2016

Analysis of the site environmentally, topographically and geographically + analysis of the human component + analysis and study of the functional components + calculate areas for each space + comparison to similar examples + functional relationships diagrams + Zoning in Site.

4.2.PRELIMINARY DESIGN (design idea) :submit on 7\12\2016

Processing of the initial idea. .Single line sketches .Plans, elevations, sections, block model.

4.3.DEVELOPED DESIGN: submit on 17\12\2016

Developing of the initial idea.Plans, elevations, sections, perspectives. detail model.

4.4.STRUCTURAL SOLUTIONS:submit on 26\12\2016

Processing of the basic structural solutions. Structural system, columns geed , foundation types, roof types....

4.5. SEMI-FINAL:submit on 31\12\2016:

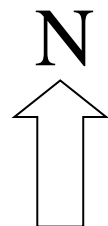
Finalize all modifications of the design and the project requirements.

4.6.FINAL PRESENTATION:submit on 7\1\2017

Finalization of all the project requirements of architectural drawings + detailed model .

5.PROJECT LOCATION:

Khartoum Almojahdeen city.





DETAILS OF PROGRAMMING & SCHEDULING:

N0	Stage title	Date
1	Data collection and analysis	Start date-14-11
1-1	Visit to smiler project(The Ministry of Planning and Urban Development).	16-11-2016
1-2	Visit to smiler project(The Ministry of Planning and Urban Development).	19-11-2016
1-3	Criticism on board for the report & analysis sheets	21-11-2016
1-4	Criticism on board for the report & analysis sheets	23-11-2016
1-5	Criticism on board for the report & analysis sheets	26-11-2016
1-6	Submission for the stages requirements.	28-11-2016
2	Preliminary design (design idea& concept)	Date of Starting -28-11
2-1	Criticism on board for the preliminary design	30-11-2016
2-2	Criticism on board for the preliminary	3-12-2016
2-3	Criticism on board for the preliminary	5-12-2016
2-4	Submission for the stages requirements.	7-12-2016
3	Developed design(Promotion)	Date of Starting -7-12
3-1	Criticism on board for the developed design	10-12-2016
3-2	Criticism on board for the developed design	12-12-2016
3-3	Criticism on board for the developed design	14-12-2016
3-4	Submission for the stages requirements.	17-12-2016
4	Structural solutions	Date of Starting -17-12
4-1	Criticism on board for the structural solutions	19-12-2016
4-2	Criticism on board for the structural solutions	21-12-2016
4-3	Criticism on board for the structural solutions	24-12-2016
4-4	Submission for the stages requirements.	26-12-2016
5	Semi-final	Date of Starting -26-12
5-1	Criticism on board for the design set.	28-12-2016
5-2	Criticism on board for the design set.	31-12-2016
6	Final presentation	Date of Starting 31-12
6-1	Criticism for the Final presentation	2-1-2017
6-2	Criticism for the Final presentation	4-1-2017
6-3	Submission for the stages requirements.	7-12017

Architectural Design studio Project no. 2

PROJECT TITLE: Industrial Building

Meat Products Factory

1. INTRODUCTION

The livestock sector occupies second place in the Sudanese economy in importance since Sudan has more than 130 million head of livestock .

Sudan is one of the richest Arabic and African States animal wealth estimated in preparing food animals (cattle-sheep-goat-Apple).

Meat is one of important nutrients, but Perishables and corruption if microorganisms or contaminants and other factors.

To decay. Use several methods since ancient times to save meat; dried

Or the salting or smoking, or encapsulate some of them. Today has developed the meat industry in the world.

The industry aims to use a range of Automated processes and physical and chemical and thermal to maintain the natural color of the meat,

And its required food, add some flavourings are desired by

Consumers like salt, spices and other materials attractive and appetizing smell them.

There is a business man (As a Clint) wishes to build meat Products Factory in (Suba Alsenaa) At the highest international standards and the latest techniques of design and construction and manufacturing

In order to achieve the objectives of this complex project, some aspect should be taken in your consideration such as ease of circulation, function flexibility , architectural aesthetical values , economical and environmental dimensions

1.2 Project Requirements :

The basic form of a Factory is, ideally, based on its functions the minimum spaces requirements are:

2. Industrial zone:

- Production halls.
- Raw-material store(Cold stores.dray store...).
- Production store(Cold stores.dray store...).
- Show rooms.
- Quality control section.

3. Services:

- Workshop.
- Rest rooms & rockery for both men and women.
- Restaurants or cafeterias.
- Clinic.
- Toilets.
- General stores.

4. Administration.

5. Landscaping:

- Soft landscape (trees and lawns).
- Traffic arteries.
- Pools and waterfalls.
- Car & truck parks.

1.3 PROGRAMMING & SCHEDULING:

1. DATA COLLECTION AND ANALYSIS: submit on 0\0\2016

(15 marks)

Analysis of the site environmentally, topographically and geographically + analysis of the human component + analysis and study of the functional components + calculate areas for each space + comparison to similar examples + functional relationships diagrams + Zoning in Site.

2. PRELIMINARY DESIGN (design idea) :submit on 0\0\2016

(15 marks)

Processing of the initial idea. .Single line sketches (plans, block model).

3. DEVELOPED DESIGN:submit on 0\0\2016

(20 marks)

Developing of the initial idea .Plans, elevations, sections, perspectives.

4. TECHNICAL SOLUTIONS:submit on 0\0\2016 (15 marks)

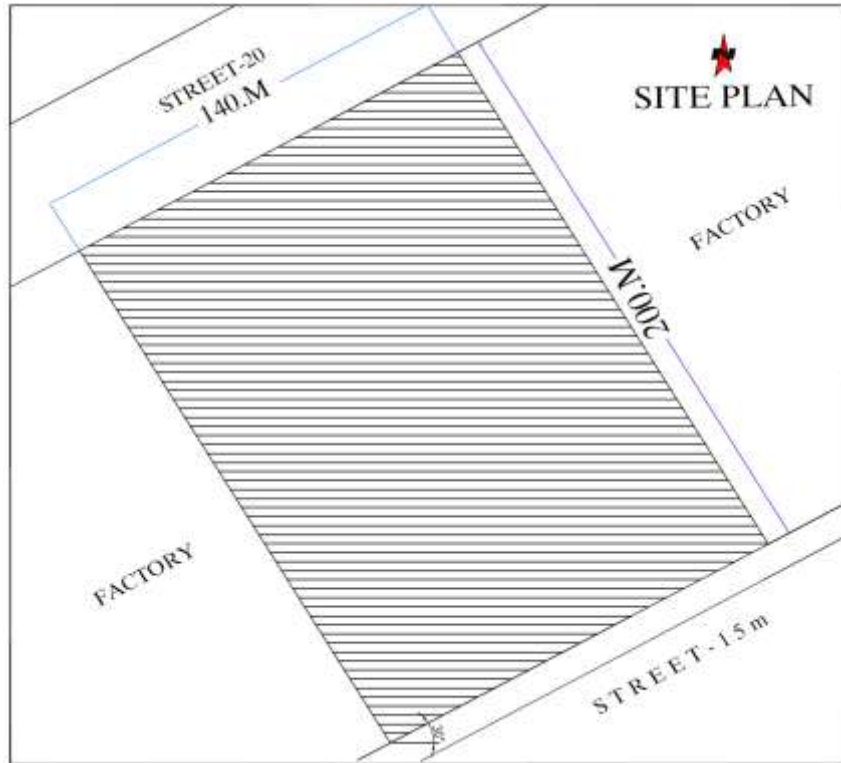
5. FINAL PRESENTATION:submit on 0\0\2016 (30 marks)

Finalization of all the project requirements of architectural drawings + pluck model by suitable scale.

1.4 PROJECT LOCATION:

SUBA ALSNAEIA





Supervised by:

Ust.MohamedAbdElMageed

DETAILS OF PROGRAMMING & SCHEDULING:

N0	Stage title	Date
1	Data collection and analysis	Start date-11-1-2017
1-1	Visit to smiler project(Meat Products Factory).	14-1-2017
1-2	Visit to smiler project(Meat Products Factory).	14-1-2017
1-3	Criticism on board for the report & analysis sheets	16-1-2017
1-4	Criticism on board for the report & analysis sheets	18-1-2017
1-5	Submission for the stages requirements.	21-1-2017
2	Preliminary design (design idea& concept)	Date of Starting -21-1
2-1	Criticism on board for the preliminary design	23-1-2017
2-2	Criticism on board for the preliminary	25-1-2017
2-3	Criticism on board for the preliminary	28-1-2017

2-4	Submission for the stages requirements.	30-1-2017
3	Developed design(Promotion)	Date of Starting -30-1
3-1	Criticism on board for the developed design	1-2-2017
3-2	Criticism on board for the developed design	4-2-2017
3-3	Criticism on board for the developed design	6-2-2017
3-4	Submission for the stages requirements.	8-2-2017
4	Structural solutions	Date of Starting -8-2
4-1	Criticism on board for the structural solutions	11-2-2017
4-2	Criticism on board for the structural solutions	13-2-2017
4-3	Criticism on board for the structural solutions	15-2-2017
4-4	Submission for the stages requirements.	18-2-2017
6	Final presentation	Date of Starting 18-2
6-1	Criticism for the Final presentation	20-2-2017
6-2	Criticism for the Final presentation	22-2-2017
6-3	Criticism for the Final presentation	25-2-2017
6-4	Submission for the stages requirements.	27-2-2017

Architectural Design studio Project no. 1
PROJECT TITLE: Administrative Building
The Ministry of Planning and Urban Development

1.INTRODUCTION:

Administration branch of social science, is the process of planning, organization and coordination, guidance and oversight of the human and material resources to achieve the best results in the shortest and lower material costs. The Department is one of the most important humanitarian activities in any society, on the basis of different stages, its development, its impact on the lives of management societies associated with economic, social, political. And because the Administration is engaged in the collection and use of economic resources to satisfy the needs of the individual and the group in society. As the Administration makes social progress, States adopt to achieve progress and prosperity for its citizens, and successful management is key to the success of the Organization and its superiority to its competitors.

The Department is also known as the process of making the right decisions and ongoing planning, monitoring and controlling the sources of institutions to reach the desired goals of the institution. Through direct hiring and developing human resources, financial, material and intellectual and moral resources.

2.THE PROJECT:

The administrative building is a building that shows the progress of society, and it's a unit of the integral community about where that office building models is inseparable from the architectural society its site depends on the purpose and quality that will be used in this building. The Ministry of urban planning one of the most important ministries associated with citizen's life is connected, as is the almost provide the most important life requirements of drinking water and electricity and residential land and territories of different services of hospitals and schools, kindergartens and other supervising premises upon which conformity to accepted standards in addition to road construction and all human development infrastructure and develop a place commensurate with the development of the region in various fields for all the Urban Planning . Ministry of urban planning of Khartoum need to created a building that combines various Ministry units of the highest design and construction specifications so that it is a landmark in the State.

3. PROJECT COMPONENTS :

The basic form of a hotel is, ideally, based on its functions the minimum spaces requirements are:

6. Administrative zone:

- High administration requirements .
- All other Ministry units requirements.

2. General Services:

- Reception.
- Restaurants and cafes.
- Toilets.
- Stores.
- Other requirements.

3. Landscaping:

- Soft landscape (trees and lawns).
- Pools and waterfalls.
- Pray space.
- Car parks.
- Other requirements.

4. PROGRAMMING & SCHEDULING:

4.1. DATA COLLECTION AND ANALYSIS: submit on 0\11\2016

Analysis of the site environmentally, topographically and geographically + analysis of the human component + analysis and study of the functional components + calculate areas for each space + comparison to similar examples + functional relationships diagrams + Zoning in Site.

4.2.PRELIMINARY DESIGN (design idea) :submit on 0\11\2016

Processing of the initial idea. .Single line sketches (plans, block model).

4.3.DEVELOPED DESIGN: submit on 0\11\2016

Developing of the initial idea.Plans, elevations, sections, perspectives.

4.4.TECHNICAL SOLUTIONS:submit on 0\12\2016

Processing of the basic technical systems.Mechanical, electrical, water supply, drainage, sewage and waste disposal.

4.5. SEMI-FINAL:submit on 0\12\2016:

Finalize all modifications of the design and the project requirements.

4.6.FINAL PRESENTATION:submit on 0\12\2016

Finalization of all the project requirements of architectural drawings + detailed model .

5.PROJECT LOCATION:

(AlBarari-Khartoum)nearby Presidential villas



